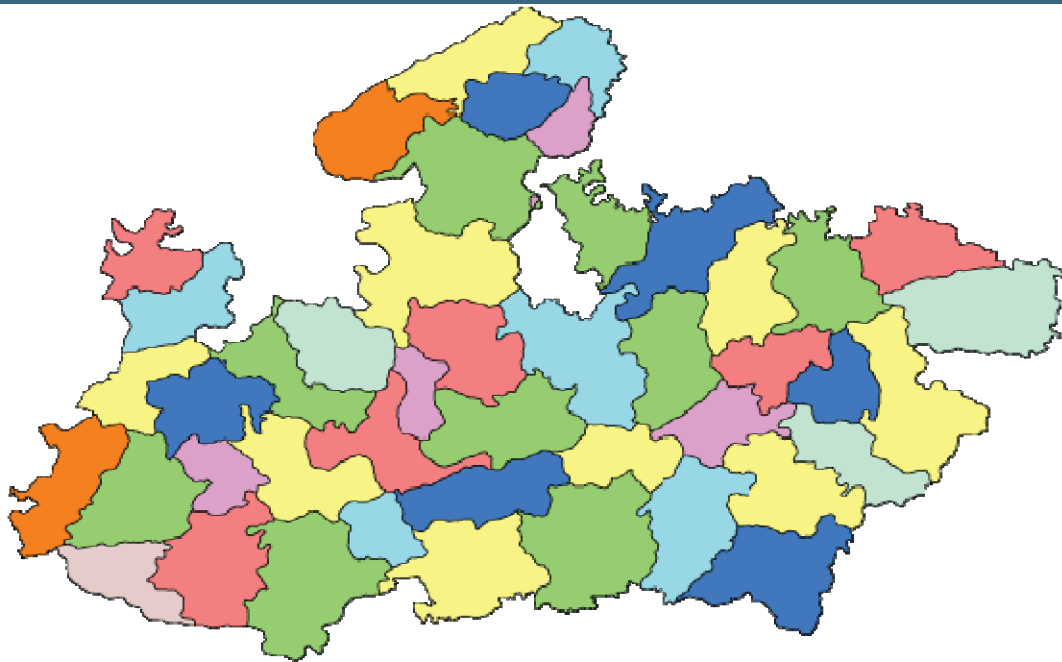




Madhya Pradesh



MONITORING XI PLAN GOALS



State Planning Commission



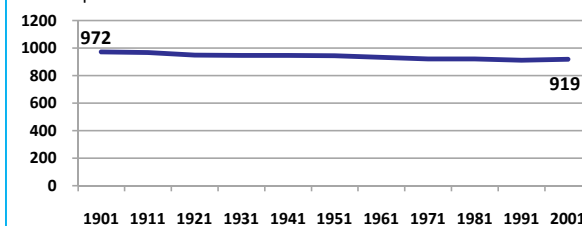
Madhya Pradesh

DEMOGRAPHICS

Location/Caste	Total	Rural	Urban	SC	ST	Non SC/ST	Time Period
Population size (000)	60348	-	-	-	-	-	(2001)
Average annual population growth rate (%)	2.2	2.0	2.7	-	-	-	(2001)
Decadal growth rate (%)	24.3	-	-	-	-	-	(2001)
Population density (Persons per Sq Km)	196	-	-	-	-	-	(2001)
Sex ratio (Females per 1000 males)	919	927	898	905	975	-	(2001)
Sex ratio (0-6 years, Females per 1000 males)	932	939	907	-	-	-	(2001)
Level of urbanization (%)	26.5	-	-	-	-	-	(2001)

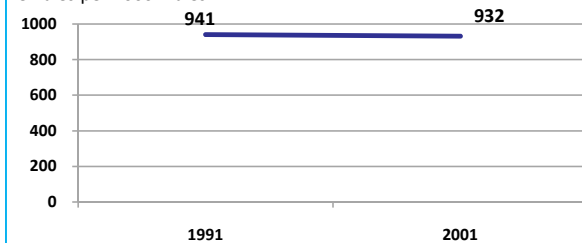
Sex ratio

Females per 1000 males



Sex ratio , 0-6 years

Females per 1000 males



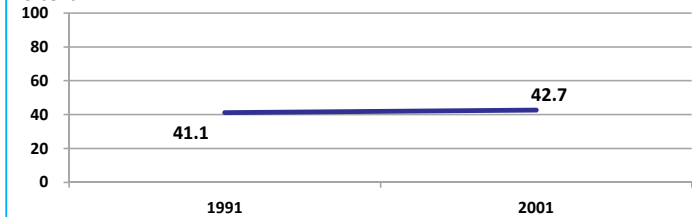
Source: Census

Source: Census

ECONOMY

Work participation rate

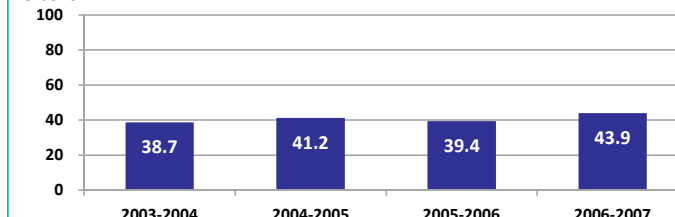
Percent



Source: Census

Net sown area irrigated

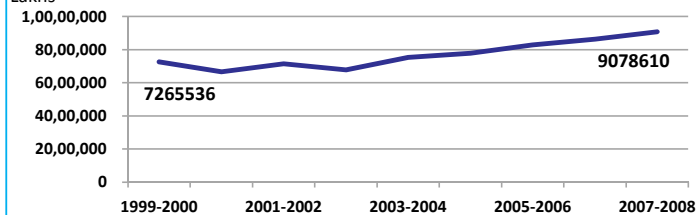
Percent



Source: Census, 2001 Projected

Net state domestic product at constant (1990-2000) prices

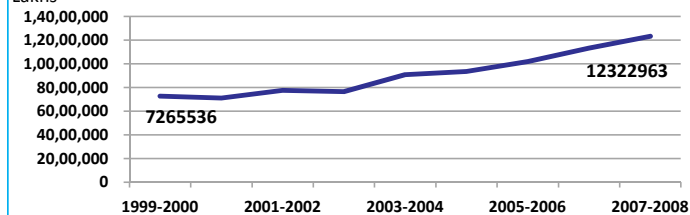
Lakhs



Source: DES, 2009

Net state domestic product at current prices

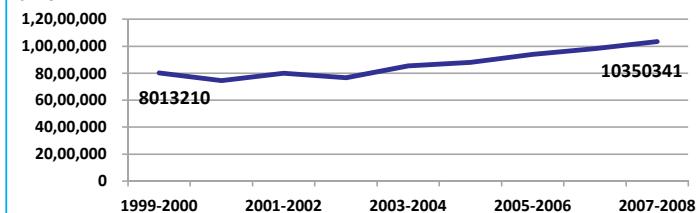
Lakhs



Source: DES, 2009

Gross state domestic product at constant (1999-2000) prices

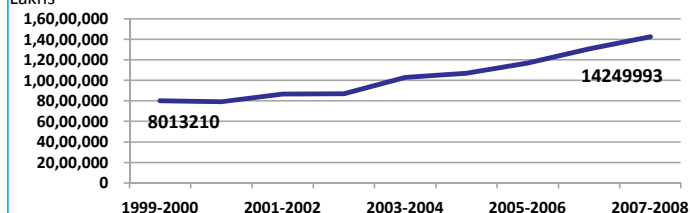
Lakhs



Source: DES, 2009

Gross state domestic product at current prices

Lakhs



Source: DES, 2009



State Planning Commission



Madhya Pradesh

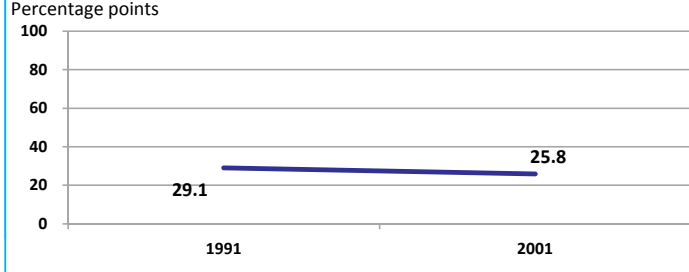
ECONOMY

Location/Caste	Total	Rural	Urban	SC	ST	Non SC/ST	Time Period
Industrial working population (%)	34554504	-	-	-	-	-	(2001)
Marginal working population (%)	11.1	-	-	-	-	-	(2001)
Main working population (%)	31.7	-	-	-	-	-	(2001)
Farmers and agricultural labour in population (%)	30.6	-	-	-	-	-	(2001)
Schedule caste population (%)	15.2	15.6	14.0	-	-	-	(2001)
Schedule tribe population (%)	20.3	25.8	4.9	-	-	-	(2001)
Households having none of the six household assets (Radio/Transistor, Television, Telephone, Bicycle, Two wheeler, Four wheeler) (#)	4602640	4099959	502681	865897	1512965	-	(2001)

Source: Census

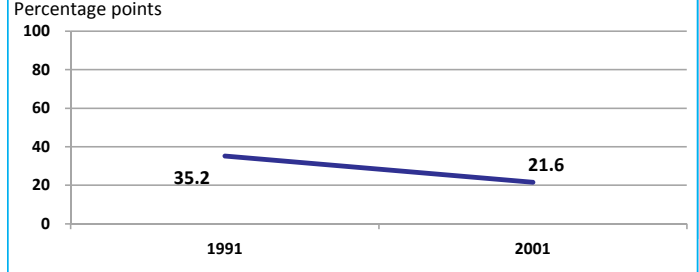
EDUCATION

Gender gap in literacy rate (Male-Female)



Source: Census

Gap in literacy rate by residence (Urban-Rural)

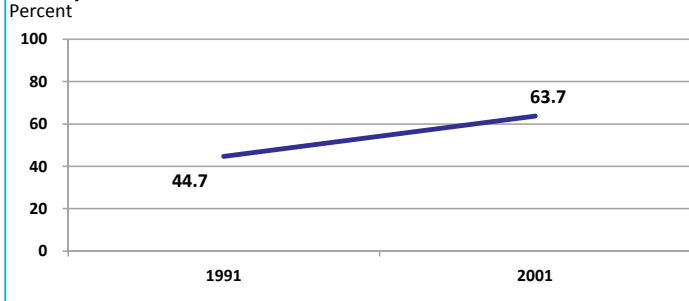


Source: Census

Location/Sex/Caste	Total	Male	Female	Rural	Urban	SC	ST	Time Period
Primary gross enrolment ratio **	143.9	104.4	104.3	90.1	-	146.9	147.9	(2008-2009)
Upper primary gross enrolment ratio **	99.4	99.8	99.0	-	-	-	-	(2008-2009)
Elementary gross enrolment ratio **	102.9	103.0	102.8	-	-	-	-	(2008-2009)
Primary dropout rate (%) **	-	13.0	14.9	-	-	-	-	(2008-2009)
Ratio of literate women to men (15-24 years) *	0.6	-	-	0.6	0.8	0.5	0.5	(2001)
Persons age 15+ completed primary education (%) *	44.7	57.6	30.6	34.9	69.3	9.4	25.5	(2001)

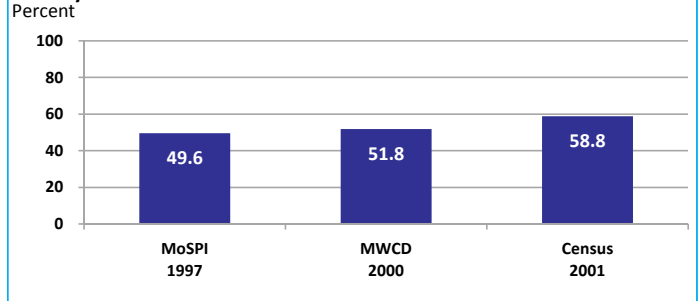
Source: Census */Rajya Shiksha Kendra **

Literacy rate 7+



Source: Census

Literacy rate 15+

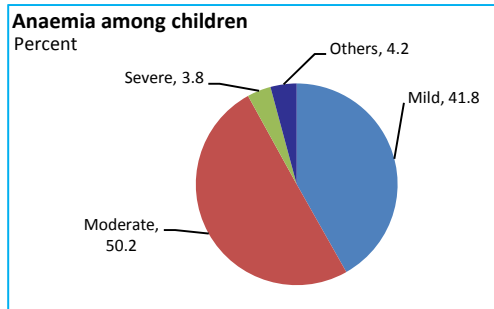


Madhya Pradesh

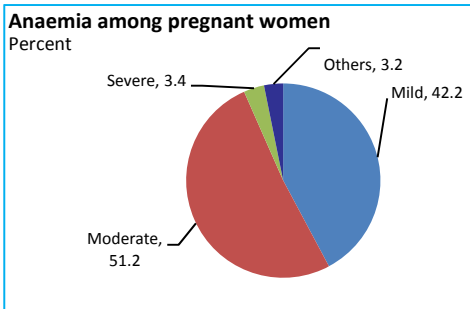
HEALTH & NUTRITION

Contraceptive prevalence rate (15-44 yr)	50.5	Fully immunized children (12-23 months)	30.4	Prevalence of underweight (moderate and severe, <6 yr)	55.4
--	------	---	------	--	------

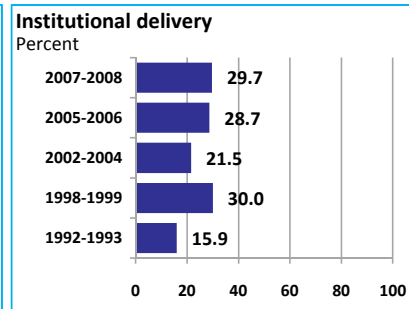
Source: DLHS, 2002-2004



Source: DLHS, 2002-2004

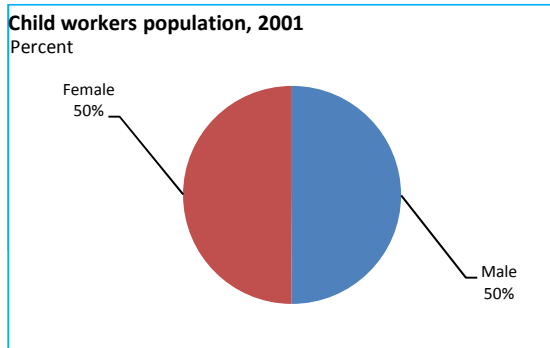


Source: DLHS, 2002-2004

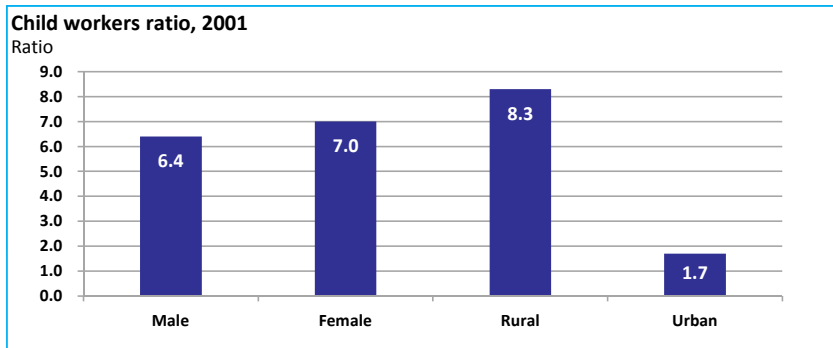


Source: DLHS

CHILD PROTECTION



Source: Census



Source: Census

ENVIRONMENT

Location/Caste	Total	Rural	Urban	SC	ST	Time Period
Households living in dilapidated houses (#)	374427	289599	84828	84897	108705	(2001)
Households without electricity (#)	3277660	3061371	216289	535803	1099600	(2001)
Households without latrines (#)	8300207	7398577	901630	1567212	2166697	(2001)

Source: Census

Habitation with drinking water access					
<40 LPCD	40 to 55 LPCD	With 0 population coverage	With 100% population coverage	With population coverage > 0 and < 100%	Time Period
-	-	-	49358	-	(2009)

Source: IMIS

INFRASTRUCTURE

Proportion of villages having any health facility PHC/SHC/AYUSH (%)	26.5	(2001)	Proportion of villages having at least a primary school (%)	80.7	(2001)
---	------	--------	---	------	--------

Source: Census

